

Saguaro to Marana 115/138kV Transmission Line Project

Este boletín está disponible en español en el sitio web



Project Purpose and Need

Arizona Electric Power Cooperative Inc. (AEPCO) and Tucson Electric Power (TEP) are planning new electrical infrastructure to serve the town of Marana, Arizona and the surrounding area.

The Saguaro to Marana Project planning process is being conducted for AEPCO to construct a new 115 kilovolt (kV) transmission line between the planned Trico Electric Cooperative Inc. Adonis Substation and existing Marana Substation. The Project will connect to the existing Saguaro Substation located approximately 7 miles northwest of Marana using an existing transmission line. TEP has identified the need for a new 138kV substation within the town of Marana. TEP will need a 138kV transmission line to provide power to this substation.

The Project will increase electric reliability and serve customers' growing energy needs, as well as add transmission capacity to support the development of future energy generation projects.

Project Description

The new Saguaro to Marana 115/138kV line would begin at the planned Adonis Substation and proceed west across Interstate 10, continuing to the planned TEP substation siting area located along West Marana Road between North Sanders Road and North Wentz Road. This portion of the Project will be constructed as a double circuit transmission line. One circuit will be owned and operated by AEPCO, and one circuit will be owned and operated by TEP. The AEPCO circuit will be energized at 115kV, while the TEP circuit will be energized at 138kV. The co-location of AEPCO and TEP assets will minimize environmental impacts and provide efficiencies in the permitting processes required to build the facilities. From the approximate location of the planned TEP 138kV substation, the remainder of the line proceeding westerly to the existing AEPCO Marana Substation will be single-circuit 115kV, solely owned by AEPCO.

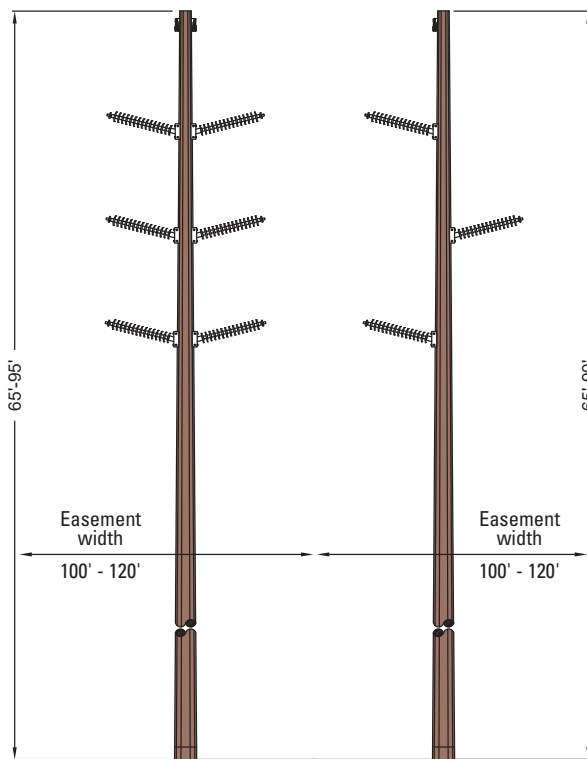
The transmission lines will utilize steel monopole (single pole) structures typically ranging in height from 65-95 feet tall, with spans of 500-700 feet in length. Right-of-way will be approximately 100 to 120 feet and may be co-located along existing roads or other utility rights-of-way.

The Project study area, interconnection points, and preliminary route alternatives that are being studied are illustrated on the map included with this newsletter.

Typical Double Circuit Transmission Structure



Proposed Transmission Structures



115 or 138kV **Double** Circuit Tangent Steel Monopole

115 or 138kV **Single** Circuit Tangent Steel Monopole

Planning and Permitting Process



The diagram to the left illustrates the key tasks and schedule that AEPCO and TEP anticipate for the planning and permitting process. At the conclusion of the environmental and engineering studies and the public process, AEPCO and TEP will submit an application for a Certificate of Environmental Compatibility (CEC) to the Arizona Power Plant and Transmission Line Siting Committee. The Siting Committee will review the application and hear the evidence from the Study Team and any stakeholders participating in the process. This hearing is open to the public, and there will be time allocated for public comments. If the Siting Committee supports the application, they will recommend issuing a CEC and forward it to the Arizona Corporation Commission for final approval.

We Value Your Input



An important component of our planning and permitting process is to receive and consider input from residents, property owners, and businesses within the study area. Members of the community and all interested parties are invited to visit our virtual open house at any time online at www.azgtsaguaromarana.com to learn more about the purpose and need for the Project, the siting process, environmental/engineering studies, and preliminary route alternatives. We are specifically asking members of communities within the study area to identify issues that are important to them with respect to the proposed transmission lines, as well locational preferences for the preliminary route alternatives considered for the Project, as shown on the map.

Your input will help AEPCO and TEP make decisions regarding the proposed transmission lines. You will be able to provide input via a public comment form on the virtual open house website, emails, or telephone hotline. We invite you to reach out to us using the contact information below or scan the QR code using your smartphone to take you directly to the virtual open house website.



www.azgtsaguaromarana.com



saguaromarana@azgt.coop



Telephone Hotline:
520-586-5252



Saguaro to Marana 115/138kV Transmission Line Project Study Area

